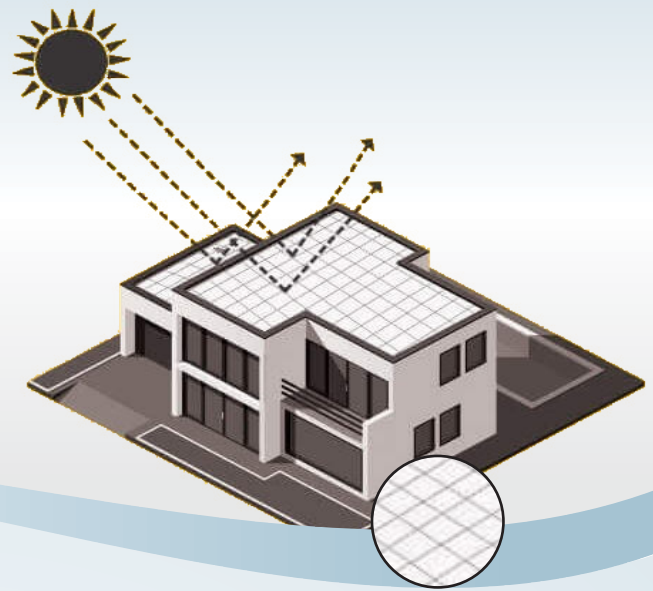


SMAC[®]

BONDCRETE HR



Cool Roof Coating

HEAT RESISTANT COOL ROOF COATING

DESCRIPTION

SMAC[®] BONDCRETE HR is a super-polymer modified heat resistant Cool Roof coating for cementitious substrates. It is a Nano-technology and Multi-ceramic technology based high performance surface coating, specially tailored for Indian climatic conditions.

WORKING PRINCIPLES

When **SMAC[®] BONDCRETE HR** is applied on cementitious surface, Nano-technology based Intelligent Chemicals react with cementitious materials and the nano-particles penetrate into capillaries. There, these reaction complexes & nano-phases create hydrophobicity.

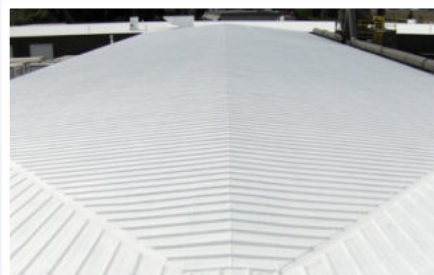
Multi-ceramic technology based particles remain active on the top and bottom surface of the formed coating. This ceramic particle layer is 100% inert and non-conductive in nature. Hence **SMAC[®] BONDCRETE HR** treatment gives high water resistance as well as heat resistance property.

APPLICATION PROCEDURE

First remove all loose particles and remove oil, grease and other loose materials contaminated on the surface. Clean the surface by water. Fill all the cracks, honey-combs, voids etc using cement mortar or our BONDCRETE RP repair compound. A 10% muriatic acid solution wash should follow. Again wash the surface with plenty of water. Let the surface dry to SSD (saturated surface dry) condition. Apply one coat of **SMAC[®] BONDCRETE HR** by brush. Second coat should be applied when the first coat is slightly tacky to touch, preferably in a perpendicular direction to the first coat.

COVERAGE

Approx. 20 sq.ft. in two coats on horizontal surface and 30 sq.ft. in two coats on vertical surface.





SMAC[®] BONDCRETE HR

HEAT RESISTANT COOL ROOF COATING

ADVANTAGES

- Heat reduction up to 20% from treated roof slab
- Excellent waterproofing qualities
- Allows “breathing” of cementitious substrate; minimizes condensation
- Excellent Ultra-violet radiation stability
- Excellent bond with common building materials like plaster, concrete, china mosaic, tiles etc.

APPLICATION AREAS

- All cementitious surfaces
- China chip surfaces e.g. parapet wall, slabs etc.
- New & Old terrace slabs
- Exterior walls

PACKING

- 1kg, 5 kgs & 20 kgs HDPE containers



Disclaimer: The information given in good faith is based on our in-house testing & site results. However, we do not guarantee the same as the conditions of actual use are beyond our control.

WE HAVE OUR OWN PROJECT DIVISION & UNDERTAKE LARGE PROJECTS.

SM
ADHESIVES

Factory & Regd. Office :

S. M. ADHESIVES

Plot No. B-82, Lote M.I.D.C., Ratnagiri,
Maharashtra - 415 722.

Tel.: +91-93222 37077

+91-94055 14594

awadeatul@gmail.com

www.smadhesives.net