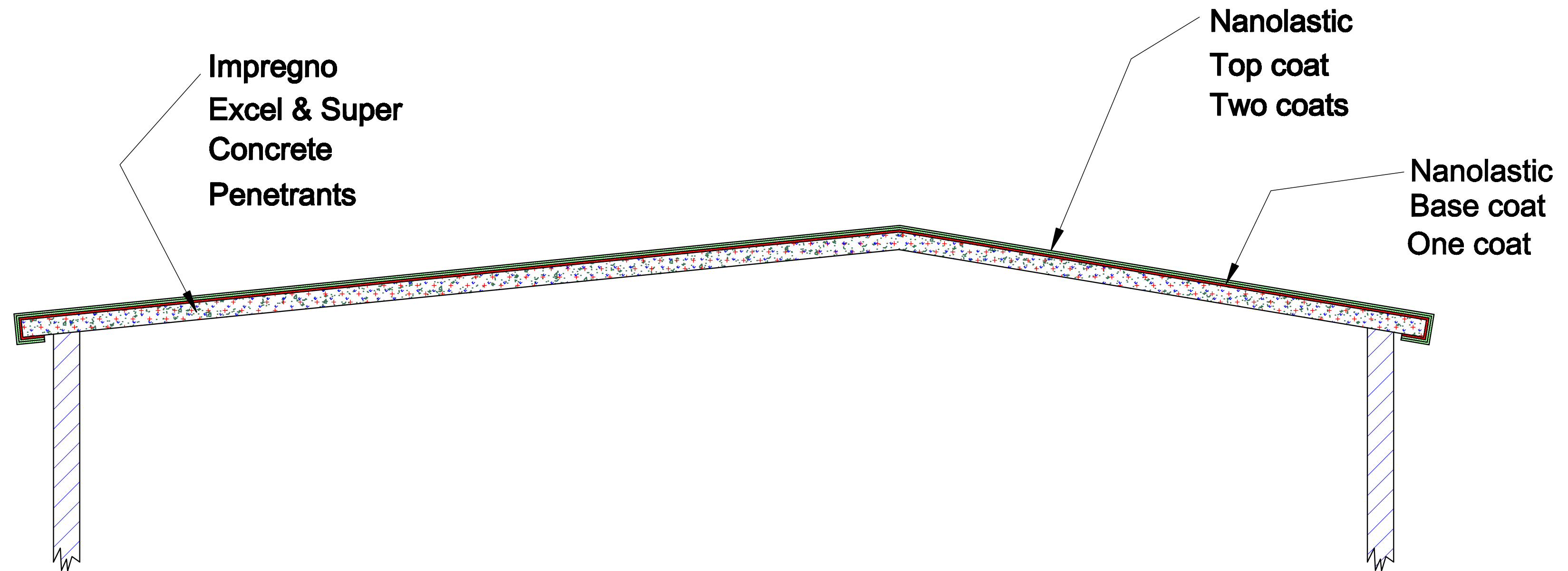


TERRACE SLAB



- NOTES:—
- 1) All the drawings for this job must be made available to Civil , Plumbing , Electrical and Fire system installers at site.
 - 2) All the agencies must co-operate with each other while carrying out the job.
 - 3) Photos and short videos of major stages of the progress of work should be sent to this office , the Architect's office and / or on the Work co-ordination group.
 - 4) Use of alternative materials is permissible subject to written approval from this office.
 - 5) Waterproofing materials specified available from : SM Adhesives , Plot no. B-82 , MIDC , Lote , Tal.— Khed , Dist.— Ratnagiri , Maharashtra , Ph-93222337077 , 9405514594

IF IN DOUBT , ASK

SCALE;—N T S
(Unless Specified)

PRINCIPAL CONSULTANT :— SRUJAN INTERIORS & ARCHITECTS PVT. LTD.

PROJECT :— LMEL _ 3 & 4 BHK

OWNER :— LLOYDS METALS & ENERGY LIMITED.

PLACE :— AT CHANDRAPUR

Y.P.Kulkarni & Associates

Waterproofing & Construction Chemicals Consultants
Shop No. B-5 , Raghunath Bhavan , Opp. Shivshakti
Vyayam Mandal , Overseer Colony , Sangli-416416

DWG. NO.:— 30002

REV. NO.:— RO